

Regis University

## ePublications at Regis University

---

Regis Alumni Publications

Archives and Special Collections

---

7-1995

### Regis University Magazine Vol 4 No 4 Summer, 1995

Follow this and additional works at: <https://epublications.regis.edu/roundup>



Part of the [Education Commons](#), and the [Religion Commons](#)

---

#### Recommended Citation

"Regis University Magazine Vol 4 No 4 Summer, 1995" (1995). *Regis Alumni Publications*. 123.  
<https://epublications.regis.edu/roundup/123>

This Article is brought to you for free and open access by the Archives and Special Collections at ePublications at Regis University. It has been accepted for inclusion in Regis Alumni Publications by an authorized administrator of ePublications at Regis University. For more information, please contact [epublications@regis.edu](mailto:epublications@regis.edu).





REGIS

UNIVERSITY • MAGAZINE

VOLUME 4, NUMBER 4

Summer 1995

*in*  
Service  
Of Others









## TABLE OF CONTENTS

Perspective .....	4
On Campus .....	6
Real-World Ethics .....	8
Development .....	12
Caring for the Community .....	14
AlumNews .....	16
Building the New Spirit of the West .....	18
Class Notes .....	20

*Michael J. Sheeran, S.J.*  
*President*  
*Robert L. Schmitz, '73*  
*Vice President for Development*  
*and Public Affairs*  
*Paul Brocker*  
*Associate Vice President for*  
*Public Affairs*  
*Jeff Sheppard, '90*  
*Director of Publications*  
*Lynn Hector, '91*  
*Manager of Media Relations*  
*Lisa Greco, '94*  
*Writer/Photographer*

*REGIS UNIVERSITY MAGAZINE* is published four times a year by the Office of Public Affairs at Regis University, 3333 Regis Boulevard, Denver, Colorado 80221. It is the official news magazine of Regis University.

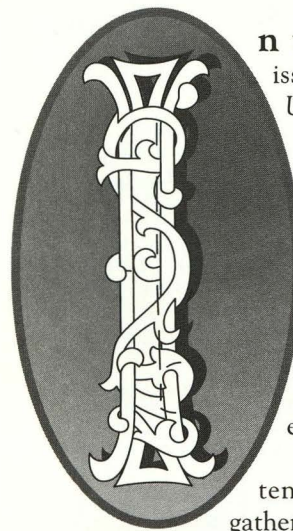
Regis University is one of 28 Jesuit institutions of higher education in the United States. The University serves more than 9,000 students through Regis College, the School for Professional Studies, and the School for Health Care Professions.

*Regis University Magazine* welcomes your letters to the editor. As space permits, we will attempt to run as many of your letters as possible.

To submit a letter to the editor write to: *Regis University Magazine*, Office of Public Affairs, 3333 Regis Boulevard, Denver, Colorado 80221.



# Service Learning: No Middle Ground



## In the Summer

issue of the *Regis University Magazine*, I have the opportunity to share with you our community service program; something I believe highlights the distinction of a Regis University education.

Recently, I attended a national gathering of faculty to discuss issues related to the integration of service and academic study, also known as *service learning*. During the two days of the gathering, I participated in discussions on charity, life, learning, and social justice. I emerged from these discussions with a renewed sense of appreciation for and

confidence in the values of a Regis University education. Moreover, I am convinced that as a result of the Regis experience and encounter, students and graduates have a distinct advantage in working towards justice for all people.

Today, more people than ever before recognize the brokenness of our world and that it is our collective responsibility to contribute to the development and sustainability of justice. A Regis education positions students to take a meaningful role in the movement towards global, social justice. Graduates become more than members of a community. They learn to be active participants in the resolution to issues of concern within that community. This becomes evident when we look at some of the types of work current students engage in as a result of the various service programs we administer. Romero House students were influential in assessing the needs and ca-

pacities of their neighborhood resulting in the opening of a health clinic based in the local parish. Other students who work for Family Tree, Inc., training elementary school children on non-violent conflict resolution, helped to write a proposal for grant money to expand into other schools. Participants in the Mexico Project learn about poverty in Mexico and have built a chapel for a poor farming community so they could celebrate the sacraments. Some students operate and participate in tutoring and mentoring programs for educationally and economically challenged youth, while others spend time on campus preparing meals for people who otherwise might not eat that day. These are a few examples of how students become engaged in the lives of people who face different challenges in life as well as learn about the social structures of injustice. Regis is clearly a leader in educating re-

sponsible citizens and producing men and women for others. However, we have not stopped here. The Center for Service Learning is called upon regularly by other institutions for information on how to develop a service program on their campuses. Additionally, through presentations, journal and book contributions, and professional associations, we share the success of our program so that other schools move towards developing graduates as men and women for others.

We are recognized nationally as producing experts in teaching service. Regis Professor of Sociology, Dr. Alice Reich is one of the first members of a group of twenty faculty from around the nation who serve as mentors for other faculty who want to integrate service into their courses. We have a model and philosophy of service that other institutions want to replicate. Director of Experiential Education, Ms. Lynne Montrose, is a fre-

quent speaker regionally and nationally on how to institutionalize a service program on a campus. Our students are recognized as leaders in the national service movement. Ms. Erika Croteau and Mr. Mario Eason are two of the forty member statewide Colorado Corps, a project derived from President Clinton's AmeriCorps program. This spring, Erika was also a finalist for the Howard Swearer Public Service Award given out by the National Campus Compact organization.

Others also recognize Regis University for our innovative service programs. Since 1987, the Department of Experiential Education has received over \$200,000 in grants with the most recent award of \$70,000 from the Pew Health Professions Commission. We are known by local organizations for our work in the community as well. In 1993, the Mile High United Way recognized the Center for Service Learning for having the Out-

standing Service Learning Program of the year.

It is important for me to note here that our success is not something that exists as a result of individuals. Our success is based on the history of Regis students working in our communities, as well as the work that graduates continue to perform in an effort to bring about social change. As a reader of this magazine, you are also a contributor to the success of what we do today. Together, we share the vision of St. Ignatius Loyola as instilled in us by his brothers in the Society of Jesus, some 450 years later. In his Homily given at St. Ignatius Loyola Church in 1989, the late Fr. Vincent J. O'Flaherty, S.J. stated, "We have to choose either to commit ourselves somehow to the Savior's struggle for peace with justice or to take the stance of unconcern. There is no middle ground." **AD MAJOREM DEI GLORIAM.**



## ON CAMPUS

# Clare Boothe Luce Program to Continue at Regis

The Henry Luce Foundation has awarded Regis University a \$473,000 grant to support a second five-year Clare Boothe Luce Professorship in Chemistry and two Clare Boothe Luce Undergraduate Scholarships. The award will continue to support women in the sciences at Regis. Dr. Kimberley Waldron was selected as the Clare Boothe Luce Professor, a tenure track position, and will begin teaching at Regis in Fall 1996.

The Clare Boothe Luce Professorships began in 1989 and Regis University was the first university in the Rocky Mountain region to receive this prestigious award in 1992.

Clare Boothe Luce left the bulk of her estate, \$70 million, to create the largest private philanthropy ever established to aid women in science. Under the terms of her will, Mrs. Luce's bequest was to fund scholarships, fellowships, and professorships for women in areas of the sciences and engineering where they continue to be under-represented.

"The continued support of the Clare Boothe Luce Professorship Program by the Luce Foundation is outstanding recognition for our science faculty," said Michael J. Sheeran, S.J. "The Luce Foundation is one of the most prestigious foundations in the nation and we are extremely proud that Regis has been awarded funding to continue the Clare Boothe Luce Program, and we look forward to having Dr. Kimberley Waldron join our faculty."



*Dr. Kimberley Waldron was selected as the Clare Boothe Luce Professor, a tenure track position, and will begin teaching at Regis in Fall 1996.*

Dr. Waldron is a trained bioinorganic chemist, and is currently a Protein and Nucleic Acids Chemist at BioStar, Inc. in Boulder, Colorado. She earned her Bachelor of Science degree in Biochemistry and Philosophy from the University of Virginia, a Ph.D. in Analytical and Bioinorganic Chemistry from Medical College of Virginia, and was a Postdoctoral Research Fellow at the Cali-

fornia Institute of Technology.

Dr. Denise E. Guinn was Regis' first Clare Boothe Luce Professor. She joined the Regis faculty in the Fall of 1992 to teach organic chemistry and has been covering special topics and a variety of non-science major courses. In addition, she has guided students researching taxol, an anti-cancer drug.

## Library Needs Volunteers

Dayton Memorial is bursting with activity. The use of the library, its collections and services, continues to accelerate at a rapid rate. Therein lies a conundrum. The University cannot add sufficient librarians and staff to keep pace with the demands, and the library

does not want to curtail services.

So the library has created a Volunteer Program. There are a wide array of jobs open to volunteers who can donate a minimum of five hours per week to the library. Opportunities to work in all departments, include cir-

ulation, media, technical services, interlibrary loan, administration, and archives. No prior experience in libraries is required.

Call Mary Lou McNatt, Administrative Services Coordinator, for more information 303-458-3556. You are needed.

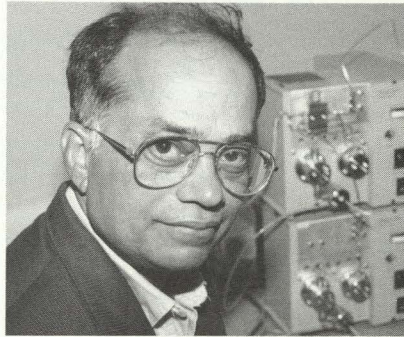


## Fulbright Scholarship Board Selects Second Regis University Professor

Over the past two years, the J. William Fulbright Foreign Scholarship Board has selected two Regis University professors to study abroad.

Dr. Surendra Mahapatro, Associate Professor of Chemistry at Regis University, has been selected for a Fulbright Scholar award in Belize during the 1995-96 academic year. Dr. Mahapatro's impressive academic accomplishments made it possible for his participation in the Fulbright Program. "I am humbled by this award," said Dr. Mahapatro. "I owe it all to my students in the Regis classroom."

Dr. Joanne Karpinski, Associate Professor of English at Regis University was selected as a Fulbright Scholar during the 1993-94 academic year. She taught Contemporary American Criticism at Moscow State University in the



Dr. Surendra Mahapatro, Regis' newest Fulbright Scholar.

former Soviet Union.

The purpose of the Fulbright Program is to increase mutual understanding between the people of the United States and the people of other countries by means of educational and cultural exchanges.

## Regis/Mind Extension University's First Graduate

Pablo Lucas, a 32-year old originally from Ecuador, South America, is the first Regis/Mind Extension University graduate. At the present time, he is a computer programmer for Hyphen Latin



Pablo Lucas and family attended graduation on May 6, 1995.

America, Inc. in the Miami, Florida area. He has a background in computers and has spent the past eight years in that field. He attained an AA degree from Miami Dade Community College, and an AS in informa-

tion systems from an Ecuadorian school. Previously, he was attending Florida International University majoring in Computer Engineering. "I had a long way to go, approximately three more years to obtain my bachelor's degree in this field," explained Pablo. After seeing the Mind Extension University network on a local community channel, he called and discovered the Regis University Degree Program in Business Administration. "I decided to change my major to Business Administration and concluded that through this learning system I could finish my bachelor's degree and also get an MBA in the same time frame as the Computer Engineering degree," said Pablo. "Regis University offers to their students individualized advising, access to the evaluating faculty via voice mail, and unique faculty and staff that really care for the success of the student!"



### Management Expert, Dr. Gareth Morgan, Visits Regis

Regis University's School for Professional Studies, with funding from the Gates Endowment for Excellence in Business Education, presented "An Evening with Gareth Morgan," on Monday, April 24, 1995. In his presentation, Morgan shared his vision of change management. Pictured with Dr. Morgan is Dr. William J. Husson, Academic Dean for the School for Professional Studies.





**W**hen Don Schierling relates a story to his ethics class in the School for Professional Studies (SPS) about how service to others can impact one's life, he doesn't need to cite the source. He is the source.

"My service opportunities helped shape my future," the SPS affiliate faculty member and Executive Vice President for International Development Enterprises, explained.

"They helped my world view and they taught me you cannot be totally defined economically. If you allow yourself to be defined only economically, you are short changing yourself and that's what I try to tell students."

And Schierling has a lot to tell. Coming out of the Mennonite religious tradition, he grew up with a philosophical and theological expectation of service. "The philosophy I grew up with was you were part of a larger world, part of a community and you had a responsibility to share what you had with others," he said.

It was a charge he took seriously. As a pacifist during the Korean War, Schierling felt he had an obligation to serve his country in some way. He spent his time building refugee housing in Germany and assisting in rehabilitation work in Macedonia.

"In Northern Macedonia I spent a year and a half in a village introducing them to agricultural improvements, new livestock, new types of seeds and new silos. It was an area where a lot of conflict and bombing

*"Most adults have lived in a monoworld and don't know how to get out of it. They have a sort of awe for those who have. I think students need to be challenged about their obligation to the larger world, the larger community."*

*Don Schierling, affiliate faculty member of the School for Professional Studies*

# Real-World Ethics





*Schierling visits with a youth group from Texas volunteering their time to paint a house in the Denver area.*

had taken place," he recalled.

He returned to the United States to teach school in Kansas, but his service orientation sent him off to upper New York during the summers, near Colgate University. He spent his time working with migrant laborers. A couple of years later, Schierling and his wife, Elvira, moved to East Harlem where they became exposed to inner city issues.

"The time I spent with the migrant laborers was enlightening," he explained. "I never realized how poverty can be right next to you. Here was a work force in the American system playing a very specific role, an economic role, but with devastating incomes and life standards. And it was right next to Colgate University."

But it was the East Harlem experience, the exposure to urban

problems that energized Schierling's life-long commitment to service. He later moved to Oklahoma City and on to Chicago before landing in Denver in 1969.

"I became very involved in the inner city problems and all the institutional and structural issues that can impact a person's life. The experience in East Harlem helped me become interested in changing issues within the inner city," he noted.

He began his life in Denver with the Mennonite Urban Ministry headquartered in west Denver. The focus was inner city issues and Schierling was in his element. In fact, it was during his first two years in Denver where he met Manny Martinez, Joe Giron and Lutheran minister Rev. Dick Mangess. It was a meeting of the minds that would

change the lives of thousands of low-income and elderly citizens in Denver and Colorado. They founded Brothers Redevelopment, Inc. (BRI) in 1971, a non-profit organization that provides affordable, safe, accessible housing and housing services to the poor, elderly and disabled.

"It was a slow start. We would pick up \$100 here and \$50 there," Schierling remembers. "Finally, we were able to raise enough money to allow Manny and Joe to leave their jobs and become full-time. Brothers is on an upswing now and doing a number of good things."

BRI today is what Schierling, who still sits on the Board of Directors, had envisioned. It is an organization that assists with the institutional and structural issues facing the inner city. The programs include a Volunteer Home



“WHEN I LEFT UNITED, A GOOD FRIEND, PAUL POLAK, INTERESTED ME IN A PROJECT HE HAD DEVELOPED. HE WAS FRUSTRATED WHEN HE SAW LARGE, EXPENSIVE SOLUTIONS BEING PROPOSED TO SOLVE PROBLEMS IN DEVELOPING COUNTRIES. HE KNEW THE POOR PEOPLE COULD NOT AFFORD THEM. AND SO HE BEGAN DEVELOPING HIS OWN SOLUTIONS WITH THE PHILOSOPHY THAT ‘IF IT AIN’T CHEAP, IT’S NOT WORTH IT.’ HE ALSO BELIEVED THAT THE USER HAD TO HAVE A 100 PERCENT NET RETURN THE FIRST YEAR OR HE WOULDN’T MARKET THE PRODUCT.”

Repair and Maintenance program that serves primarily low-income elderly and persons with disabilities; a Neighborhood Caretakers Program designed to renovate decaying neighborhoods quickly; a Paint-a-Thon that paints the homes of 500 or more senior citizens on one day each year; a home counseling program to prepare low-income families for home ownership and counsel low-income homeowners who are facing possible foreclosure. In addition, BRI manages five low-income properties and conducts a Construction Program aimed at non-profit organizations.

“Part of my commitment to the inner city comes out of my own experience,” Schierling points out. “I lived in the inner city of Los Angeles when I was young and out of that learned to understand and survive in that world, and not fear it. I became interested in the whole issue of how do I become a bridge between communities. My concern was how do you bring resources from one community to the other. To help and provide resources, people need to work with someone they trust. I’ve always felt people could work with me and through me.”

While helping to develop Brothers Redevelopment into a strong community resource, Schierling put his talents to work as a community relations officer with United Bank of

Denver (now Norwest Bank), making another significant impact. Hundreds of organizations and individuals utilized his expertise including the Children’s Museum, a special learning museum for young people; Family Focus, a program designed to assist parents in welfare families in obtaining jobs; Colfax on the Hill, an effort to turn around neighborhoods devastated by prostitution, drugs and lack of ownership; and Neused, an economic development organization in west Denver.

After leaving the bank, Schierling has continued his strong interest in inner city issues -- but his focus is more global. “When I left United, a good friend, Paul Polak, interested me in a project he had developed. He was frustrated when he saw large, expensive solutions being proposed to solve problems in developing countries,” Schierling explained. “He knew the poor people could not afford them. And so he began developing his own solutions with the philosophy that ‘if it ain’t cheap, it’s not worth it.’ He also believed that the user had to have a 100 percent net return the first year or he wouldn’t market the product.”

The result has been the establishment of International Development Enterprises, which markets low-cost simple technology such as a manual irrigation pump that costs \$35. The

non-profit group has already established networks in Vietnam, Cambodia, five states in India, Bangladesh and Nepal. Future travels include Sri Lanka, Thailand, Indonesia, Burma, Tanzania and Pakistan.

“Our goal in each instance is to put in place a sustainable network that is not dependent on us,” Schierling said. “Once in place the network uses mass marketing strategies to create and distribute low-cost tools that help break the cycle of poverty and foster self-sufficiency in the Third World.”

Through all of his activities, Schierling also finds time to teach ethics. “I have taught at Regis since they began the adult programs and it’s been one of the most enjoyable experiences of my life. It’s a challenge because the students know what they want out of it.”

What do they think about his global service activities?

“Most adults have lived in a monoworld and don’t know how to get out of it,” Schierling said. “They have a sort of awe for those who have. I think students need to be challenged about their obligation to the larger world, the larger community. And I think it’s important for a person like me to be in the classroom so the students can see that the average person can do it.”



## DEVELOPMENT

# Regis Donors Take Annual Fund Over the Top

Support from Regis University alumni, parents and friends helped raise nearly \$1 million for the 1994-95 Annual Fund, almost \$50,000 more than the goal for the year.

Alumni led the way, with a total of \$442,871, from 3,155 donors, the dollar amount actually exceeding the 1993-94 total. Corporate donors also contributed a total of \$317,853, nearly matching last year's results. Gifts from parents, individual friends, and foundations rounded out the total.

Total giving to the University amounted to \$2,851,948, almost \$450,000 over the previous year, with \$672,743 more contributed to restricted purposes than in 1993-94. This was a ten-month year due to a change in the University's fiscal year. Had this been a

full twelve-month period, it is likely that total giving would have set a new record.

Much of last year's success is due to strong response to Telefund. The fall volunteer campaign raised over \$400,000 in pledges from 3,721 donors. Students made calls in the spring, and added an additional \$43,000 in pledges from more than 1,000 donors.

The Directors of Regis and the President's Council both showed increases over last year. This year, the President's Council which is celebrating its twentieth year, will have four new levels of recognition. Two will be for annual giving, and two will recognize lifetime contributions. All except the Member level of \$1,000 will be named for past presidents of Regis College and Loretto Heights College.

### PRESIDENT'S COUNCIL GIVING CIRCLES

*The Pantanella/Bonfils Society*  
\$50,000 Lifetime Support  
(New)

*The Ryan/Walsh Society*  
\$25,000 Lifetime Support

---

*The Kelley Circle*  
\$10,000 Annual Support (New)  
*The Flanagan Circle*  
\$5,000 Annual Support  
*The Brown Circle*  
\$2,500 Annual Support (New)  
*The Member Circle*  
\$1,000 Annual Support

## Library/Perimeter Project Gets Boettcher Boost

Plans to renovate the Dayton Memorial Library and the perimeter of the Lowell campus received a major boost

in January with a challenge grant from the Boettcher Foundation of \$500,000. Regis has one year from the date of the

grant to raise the rest of the funds for the joint project. Total commitments stand at just below \$4,500,000 toward a goal of \$6,500,000.

The Boettcher grant brings matching money to a total of \$850,000, including an earlier challenge from the Adolph Coors Foundation. Other recent gifts are \$50,000 from the Charles A. Frueauff Foundation, and \$12,500 from the Burlington Northern Foundation.

Construction on the renovated library is anticipated to begin in 1996. Plans include a dramatic increase in shelf space, new heating and cooling systems, as well as a system-wide upgrade of electronic and computer resources designed to serve the entire Regis community.

### Take Your Place in the Plaza of Excellence!

Individuals now have an opportunity to participate in the fund drive for the library renovation. The library includes a plaza area facing the Boettcher Commons, which will be paved with bricks. Alumni, parents, and friends are invited to buy a brick in the "Plaza of Excellence." Each brick can be inscribed with the donor's name, the name of someone else to be honored, or another appropriate message.

The renovated library is scheduled to open in 1997 -- the 120th anniversary of Regis' founding. Bricks can be purchased for \$120. Donors may also purchase a larger logo tile for \$1877, symbolic of the founding year. Other naming opportunities in the library are available for gifts of \$10,000 or more.

For more information about Plaza of Excellence bricks, please contact the Regis University Alumni Office at 303-458-3536.



## Profile in Excellence: Mary Michieli Rollins '52 LH

Mary Michieli Rollins, '52 LH, exemplifies the words of the Heights school song: "hold the torch ever firm in your hand, let the rays of its light lead you onward spreading courage and hope through the land." That light, symbolic of God, is what directs Mary's multifarious services to the community at large. She is wife, mother, healer, poet, businesswoman and philanthropist.

Tom Rollins proposed to Mary while he was a senior, majoring in geological engineering, at Colorado School of Mines. His bait (he thinks in fishing terms) was that he would take Mary with him to see the world. They've seen a lot of the world, and more importantly, they've raised two sons: Thomas Michieli Rollins, a graduate with honors from both Georgetown and Harvard Law, and now President and CEO of The Teaching Company in Springfield, Virginia and Theodore Allen Rollins who attended the University of Texas, Austin, and is Vice President of Manufacturing in the same company.

Carol Lee Flinders' *Enduring Grace*, the story of seven women mys-



Mary Michieli Rollins '52 LH

tics, has influenced Mary and given her confidence to follow God's lead in healing the body, mind and spirit. In describing the book, she said, "I wept, and with the work I do, I see the modern parallel." Her own book describing her work as healer will be published in Fall '95.

Last November Mary donated one of a series of twenty-five wooden boxes containing twenty of her poems to Regis University. Her cousin Fine

Arts Professor, Vincent Anthony Mariani, at the University of Texas, Austin, convinced her not to re-work the poems, but to let them stand as she had written them almost twenty years earlier. "He believed that the essence of my beliefs, as expressed in my writings, had not changed." That statement points to Mary's ability to balance tradition with change. Regis, also, gratefully accepted six Spanish Colonial religious artworks as a gift from Mary.

In Houston, where she and Tom make their home, Mary serves the Houston Arboretum and Nature Center, as trustee. The Carl Jung Educational Center is pleased to have her as an advisor. She is trustee and investor in the Denver Railway Car Company and the Mexican-American Railroad Association.

Mary is reflective and serious about her response to "service for others." She holds that torch firmly, and its rays spread light to all in need. Above all, Mary is fun-loving and fun to be with -- that in itself is healing. Thank you, Mary, for being an integral part of our Regis community.

## Exercise Your Will Power

Planning your will is more than an important responsibility, it is one of life's greatest privileges. To find out why, and for suggestions -- in straightforward language -- on how to plan a will that works, order our new booklet, "The Regis University Ignatian Society Will Planning Guide."

For your **FREE** copy, check the first box below, fill in the blanks, and return this card to: Regis University, Christopher Wurster, 3333 Regis Boulevard, Denver, CO. 80221-1099. This information will be kept confidential, and there is no obligation.

- Please send a free copy of your booklet on will planning.
- Please send a Regis University Ignatian Society membership brochure.
- I have already provided for Regis in my estate plans.

Name (please print) \_\_\_\_\_ Phone Number \_\_\_\_\_

Address \_\_\_\_\_

City \_\_\_\_\_ State \_\_\_\_\_ Zip \_\_\_\_\_



# CARING for the COMMUNITY

REGIS' SCHOOL FOR HEALTH CARE PROFESSIONS PROVIDES LEARNING IN SERVICE OF OTHERS

Since 1987, the Center for Service Learning has been building a national reputation by recruiting students from the College to serve in the local community and to integrate those service activities into the various disciplines and classrooms on campus. Service Learning is a method and philosophy of experiential learning through which participants in community service meet community needs. At the same time, the participants develop critical thinking and

group problem solving skills, commitments and values, and the other skills they need for a more effective citizenship.

Equipped with the knowledge of service learning and an understanding of an ever-changing healthcare industry, the Center for Service Learning, in conjunction with the School for Health Care Professions (SHCP) will begin to integrate service learning into the Nursing and eventually into the Physical Therapy program.

Earlier this year, Regis University was notified by the Pew Health Professions Commission that it would receive the Health Professions Education for the Future: Schools in Service to the Nation (HPSISN) grant. The HPSISN program is a unique opportunity for 20 health professions schools nationwide to integrate and institutionalize service learning into core curricula, and to introduce faculty and students to the civic responsibility of their chosen profession. The program also offers a unique oppor-



tunity for health professions schools to bridge partnerships with community members and health leaders, which is an essential element in reforming health professions' education. Regis was chosen after a rigorous application process that included proposals from 89 other institutions.

Candy Berardinelli, Associate Professor of Nursing in the School for Health Care Professions, will be the primary project coordinator. "In the nursing profession and in the coursework that accompanies nursing, there is a lot of community service," explained Berardinelli. "This opportunity is a slight shift in thinking from community service to service learning. The big difference between the two is that with service learning the students return to the classroom for reflection and integration of the service into the learning process," said Berardinelli. "This process creates a deeper connection between the students, the community agency and the University."

With planning beginning this Fall, and scheduled implementation to begin in Spring 1996, two service sites have already been chosen -- the clinic at Our Lady of Guadalupe parish in Northwest Denver and a Headstart program at Children's Services of Colorado.

In the fall of 1992, nursing students living at Romero House, a faith community consisting of Regis students living in a low income Denver neighborhood, conducted a needs assessment for Our Lady of Guadalupe parish. Major concerns were teenage pregnancy, low numbers of children being vaccinated, a 300% increase in diabetes within the Latino community, lack of pre-natal visits, and access to medical care by individuals virtually nonexistent.

The identification of those needs resulted in a free community health clinic which opened this spring. James G. Garcia, Our Lady of Guadalupe parish president, estimates 2,500 patient contacts during the first year of operation. "We feel the services and health education programs provided at the clinic will help meet a critical need in

our community," stated Garcia. Students assigned to the clinic will provide free minimal screening, referrals, physical exams, blood and urine sampling, and immunizations.

The second service site, a Headstart program at Children's Services of Colorado, has requested SHCP students to administer pre-school physicals and to teach parenting classes. A minimum of



*"After attending the HPSISN conference in San Francisco with other grant recipients, I realized how much farther ahead Regis is with service learning than many other schools."*

Candy Berardinelli, Associate Professor of Nursing in the School for Health Care Professions

six additional service sites or activities will be developed during the first two years of the grant. "Both of these sites are located closely to Regis," explained Berardinelli. "Although we will have a number of students to place and realize we will eventually branch out, it is important to keep it close to home in the beginning."

Courses have already been targeted for integrating service learning into the curriculum. The Undergraduate Nursing program will focus on the following courses: Introduction to Nursing Roles and Concepts, Nursing Care of Children and Their Families, Nursing Care of the Childbearing Family, Adult Health and Illness I and II, and Community Health

Nursing. All of these courses are required, and have at least 96 hours of clinical requirements per semester attached to them. The Department of Physical Therapy plans to integrate service learning into their theory series: Professional Issues.

"One of the most exciting parts of the grant is that students will be able to utilize the service learning component as part of their clinical experience," explained Berardinelli. Typically, clinical experience is gained in a hospital setting. "We continue to find an emphasis in primary care rather than specialization in medical and health professions' schools." Primary care, (the point at which one enters the health care system for the first time), is continuing to come to the healthcare forefront. "We (Regis) saw the need to do something now, so the institution and its students wouldn't lose its place in an evolving health care system."

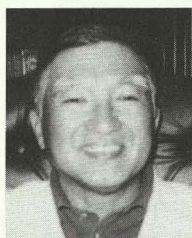
The impact of what Regis is doing with service learning is recognized nationwide. "After attending the HPSISN conference in San Francisco with other grant recipients, I realized how much farther ahead Regis is with service learning than many other schools," expressed Berardinelli. "They are struggling with what service learning means, and we're doing it."

The long term goals of integrating service learning into curriculum at the School for Health Care Professions are to make a positive impact on the health of residents in Northwest Denver by developing partnerships between Regis and the surrounding community, cultivating an ethic of life-long service among Regis students and providing those students with community-oriented skills necessary to practice in a changing health care environment. Although these may be new goals for the curriculum in the School for Health Care Professions, service learning at Regis University is a thing of the past, present, and future. As Berardinelli reflects, "When service learning happens, the commitment to the community begins, and I think it becomes a life-long endeavor."



## Alumni Honorees at 1995 Spring Commencement

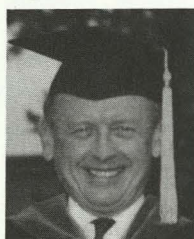
The Alumni Association honored three individuals during the 1995 Spring Commencement. The 1995 Alumni Awards for Service and Achievement were presented by Mike Grace, '67, Chairman of the Regis Alumni Association. The Alumni Awards recognize individuals who have made exceptional achievements in their field of endeavor, while exemplifying human and judeo-Christian principles of ethics in their life and work. In light of the Jesuit tradition, these achievements become exceptional when one's intent is to serve the greater good of our society.



*Dr. Yamamoto*

**Dr. Ronald K. Yamamoto, '64**, was recognized with an Alumni Achievement Award. After graduating Cum Laude with a degree in science from Regis in 1964, Yamamoto continued his education at the University of Colorado, receiving a

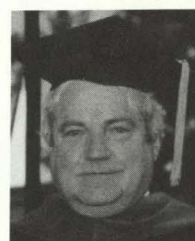
doctorate. Today, Yamamoto has a private practice specializing in Orthopedics and Sports Medicine. Due to a prior commitment working with the International Foreign Mission Board near Madagascar, Yamamoto was unable to attend the ceremony. However, his parents, Dick T. and Helen Yamamoto were present to accept the award on behalf of their son.



*Dr. Telatnik*

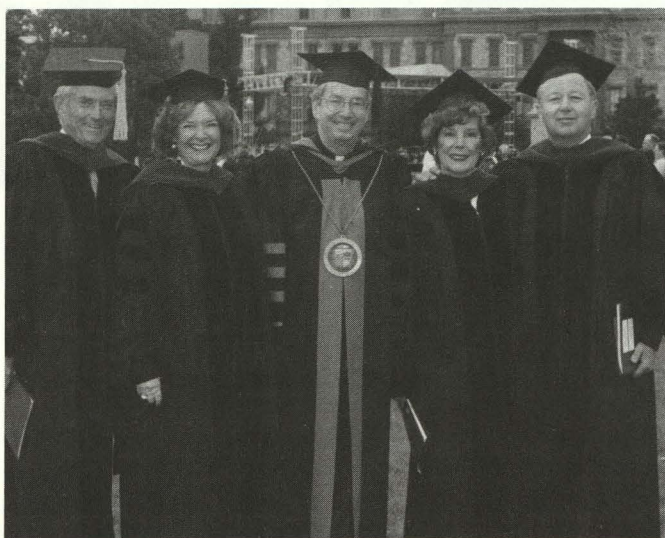
**Dr. Stephen C. Telatnik, '60**, was presented with an Alumni Service Award. Telatnik graduated Summa Cum Laude from Regis with a science degree in 1960 and received his MD from the University of Colorado in 1964. Currently, he is a private practice physician and a board certified pulmonary specialist residing in Colorado Springs. His dedication to Regis is evident in his 13 years service as a Class Repre-

sentative and his commitment as a member of the standing committee of the Board of Trustees on Academic Affairs for over a decade. Telatnik now serves the University as a Regent of Regis.



*Mr. Curran*

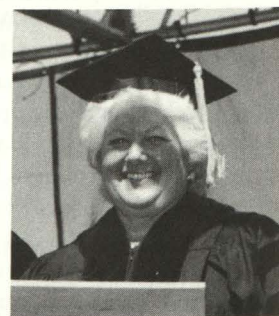
**Michael A. Curran, '64**, was also presented with an Alumni Service Award for his volunteer service on behalf of Regis University. Curran received his law degree from the University of Denver in 1968, and is a member of the Colorado Bar Association. He has chaired the Regis Golf Outing for the past 29 summers. He was also chairman for his 25 and 30-year class reunions, and has volunteered at numerous Regis telefunds over the years. In addition, past Business and Industry Campaigns have been strengthened by Curran's efforts.



*John V. II, and Carol A. Saeman and Richard O. '57 and Dorothy M. Campbell, pictured with Fr. Michael Sheeran, each received an honorary degree of Doctor of Public Service on May 7.*



*(Left) Judge Leonard Plank '54 was presented a Civis Princeps award on May 7.*



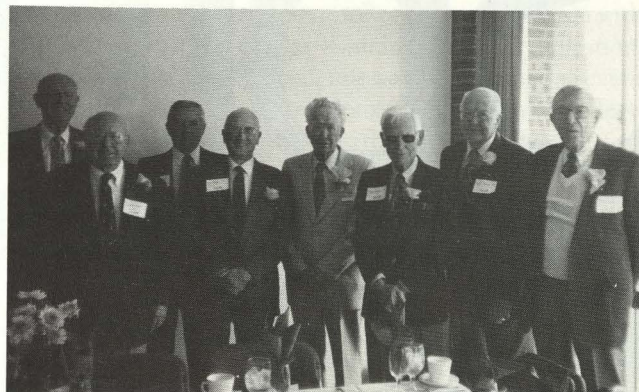
*(Right) Ann F. Luke, Director of Bereavement at the Hospice of Metro Denver, was honored on May 6 with a Civis Princeps.*



## ALUMNEWS



Regis College Class of 1945 50-year reunion, left to right: Jerome Jacobs, Aldo Notarianni, Gilbert Castellan (Not pictured: Jim Noone).



Regis College Class of 1935 60-year reunion, left to right: Jim Redmond, Andrew Hawk, Charles Bailey, Joe Briley, Orville Tranior, Dan Higgins, Bert Semler, Max Jonke (Not pictured: Lou Weber).



(Above) Members of the Regis College Class of 1975 celebrated their 20-year reunion into the wee hours of the morning!



(Below) Loretto Heights College Class of 1945 - Top row, left to right: Mary Louise Fick Dechant, Cathey Schrodt Ott, Edith Ann Jaeger, S.L., Eleanor Dant, Martha Norris, Jeanette Esponda Maxwell, Mary Taylor Sullivan, Vivien Street Jacobs, Elinor Myers McGinn, Carlos Lubeck, S.L., Patricia Brin Levinger, Ellen Kenehan Johnson, Julianne Tobin Ross, Barbara Neiters Buchen, Betty Spehar. Seated row, left to right: Stephana Custy Revitte, Ruth Graber Shepard, Virginia Duggan Koonce, Eileen Marie Heckman, S.L., Gertrude Brunelli, Catherine Pruisner Roche, Carolyn Haninger, Loretta Roeseler Bonham.



(Left) Regis College Class of 1955 - Top row, left to right: Richard Cloughesy, Frank Priselac, Dick O'Malley, Lee Hudack, Ed Sweeney, Walt Imhoff. Bottom row, left to right: Duane Knight, Norbert Hermes, Paul Buhler, Bill Owens, Phil Fertitta, Bob Kelly.



# BUILDING THE NEW Spirit OF THE West

It is not so unusual that most eight-year-olds have never been on a horse. In reality, such an activity for inner city youth of low economic backgrounds is something left only to the imagination. But in April, fifteen children from the Denver area were given a chance to live this dream.

As participants in the academically-based, nonprofit organization For Children Only, these youngsters were invited by the Regis Saddle Club to capture and create their own understanding of the West. "We wanted to focus on what our club could uniquely do for the community," explains Dennis Steele, Associate Professor of Computer Science and faculty advisor for the Saddle Club.

Formed in the Spring of 1994, the Saddle Club's purpose is to promote increased knowledge and greater interest in western style horseback riding, as well as the outdoors. Steele's background as a Wyoming native and his rustic log home, which also acts as an authentic working ranch, illustrate a living example of the club's objective. For the Regis students, his ranch has become an extension of the Regis campus.

In designing a service learning project to specifically benefit children, Steele connected with Regis sophomore Ted Kinealey ('97), whose mother, Theresa Kinealey, founded and directs the For Children Only organization. Assisting the Education Outreach Program, this after school organization not only fills in educational gaps for the children through homework assistance, but also offers sports activities and arts programs. Its main purpose is to help build the self-esteem of children and at-risk youth living in shelters and low-income housing, and to round out their education as a whole. "Ultimately our intent is to instill each child with positive feelings about who they are, what they can do, and to frame the message of staying in school with a better outlook for their future," comments Kinealey.

Exposing children to opportunities like horseback riding was a basis for establishing her organization. Therefore, Kinealey was more than responsive to the idea. The fifteen children (from her program of 105) selected to participate



Brian Gillen, Regis senior and Saddle Club president, assists A...

on this day were chosen on their own merit. Kinealey justifies this policy by placing certain demands and responsibilities on the children. "Special trips like this one to Wyoming serve as goals for the kids to work toward," she explains. "They have to earn the right to go by having good school attendance, completing homework assignments, and showing commitment to the program."

Once the group had caravaned west of Cheyenne to the foothills of the Medicine Bow Mountains, where Steele's Bit-



# THE REGIS UNIVERSITY SADDLE CLUB



age 10) with riding skills.

O-Wyo Ranch is located, not even a snow storm was going to deter them from experiencing the west on horseback. Starting the day off with a bowl of homemade chili, the children then ventured on two different trail rides led by the Saddle Club. They also had the freedom to enjoy campfire stories, hiking, and walks along Brush Creek. Their day ended with a barbecue back at the ranch. "The children had an opportunity to experience many different activities during their time at the Bit-O-Wyo," recounts Steele. "Although it was only a day trip, we wanted them to have the time of their lives."

As a method of integrating academics and the Regis mission, projects like this

help to raise an awareness of social issues. "Service learning has a sensitizing effect for all individuals involved. The children are not only presented with a safe opportunity to do something unusual, but their association with the students will hopefully serve as a motivational factor for them to commit to achieving an education," notes Steele.

Beyond the enjoyment that the children experience is the learning transformation the Regis student encounters through the service of others. As Steele

remarks, "I noticed a sense of pride and accomplishment. Some realized, maybe for the first time in their life, that they have the capability to enhance another person's life by not only volunteering their time, but giving of themselves."

Regis senior and Saddle Club President Brian Gillen reflects, "I remember being exhausted at the end of the day from leading the horses up and down the trails. It was a lot of work, but it was all worth it to give these kids a chance to visit Wyoming and to ride the horses."

Following in his family footsteps, Gillen has grown up around horses since he was three years old. Today, he is a professional calf roper, a rare export from Long Island. "I feel like I am preserving a part of history that is being forgotten. That is why it was important to me to work with these kids. It was my way of sharing a western tradition. I hope we created a memory for these kids they will treasure," Gillen said.

Gillen's most memorable aspect of the day was his interaction with a little eight-year-old boy named Luis. "It was on the first ride out that the horse Luis was riding jumped over the creek. This brought Luis to instant tears. I pulled him from the horse immediately and had him walk with me the rest of the day," recalls Gillen. "I felt I had built up his trust. It worked! By the end of the day he had enough courage to take the last ride out. It had started to snow, so we rode the horse together. I let the horse run up and down the hills. When we returned to the ranch, I saw Luis run to his friends and tell of his adventure."

As a commuter student from Evergreen, Gillen has become more connected with the Regis student body through the Saddle Club, whose participants have totaled close to sixty. Having transferred his lifestyle into this extracurricular activity, Gillen remarked, "Considering the weather, I admired how the student volunteers were still excited about seeing the project through to the end, knowing that the kids would not have expected anything less from 'cowboys'."

As Steele observed, "The children literally made heroes out of the students just for helping them out." But this outing was not Regis' first connection with the For Children Only Organization. Instead, this was the culminating event of a year-long collaboration with Regis students. In the Fall, both the men's soccer and women's volleyball teams offered tutoring and sports instruction to the children. And in the Spring, Dr. Eleanor Swanson's Sophomore Seminar class tutored the children throughout the week.

"The dominating aspect of the day was the expression of the children when they were on the ranch horses... high in the air, smiling, laughing, with their feet sticking out because they could not reach the stirrups... just having a blast in this scenic country," Steele pointed out.

Capturing this spirit of compassion for human nature is a new direction in education, but one Regis was founded upon. "Regis is a place where I can deliver more of the 'product' of education. For me, the bonding and fellowship of one-on-one interaction provides more than textbooks and lectures," stated Steele. The dynamics of his teaching style also reflect his interest and direction in contributing to the community.

While still at the University of Wyoming, Steele made his connection with Regis as a School for Professional Studies affiliate faculty member, and became a full-time professor in the College in the Fall of 1992. Steele spreads himself across the curriculum as not only faculty advisor for the Saddle Club, but also for the Men's Tennis Club, the Ramblers (an acappella singing group), the Association for Computing Machinery student chapter, and the Young Republicans.

The Saddle Club has plans to continue similar projects with children, possibly to include handicapped, and to increase the number of outings to twice a year. "Just watching the children enjoy what we were doing for them was proof enough that this was a worthwhile project," reflects Steele.



## CLASS NOTES

### REGIS COLLEGE

TU - Traditional Undergraduate  
MW - Master of Whole Learning

### LORETTO HEIGHTS

LH - Traditional Undergraduate  
NU - Nursing

### SCHOOL FOR HEALTH CARE PROFESSIONS

BN - Bachelor of Science - Nursing  
HM - Health Administration Management  
MN - Master of Science in Nursing  
PT - Master of Science in Physical Therapy

### SCHOOL FOR PROFESSIONAL STUDIES

R1 - Recep - Colorado Springs  
R2 - Recep - Denver  
RS - Recep - Sterling  
FZ - Fitzsimons  
UW - University Without Walls  
MB - Master of Business Administration  
MS - Master of Science in Management  
MA - Master of Community Leadership  
MP - Master of Non-Profit Management  
ML - Master of Liberal Studies

Note: Thank you to all of those who have responded recently with your news. Due to overwhelming recent response, we were unable to publish everyone's news in this issue, but will run the information in future issues of the Regis University Magazine!

## REGIS

1954

**John Conway, TU**, was recently appointed by the Denver Manager of Parks and Recreation to serve on the City's Golf Advisory Committee as an at-large representative.

1957

**Wally (Clark) Shannon, TU**, was recently appointed to Quad-Graphics as chauffeur for Mr. and Mrs. Quadracci.

1958

**Robert Moynihan, TU**, was the winner of a National Symphony lottery, and conducted the orchestra at the Kennedy Center in Washington, D.C., sharing the podium with Erich Kunzell of the Cincinnati Pops. He announced to the capacity crowd that the event marked both his conducting debut and his farewell concert! He is a full professor of English at the State University of New York, and spent the fall at the Folger Shakespeare Library in Washington.

**Ray Nass, TU**, and his wife **Mary (Joerns), '59 LH**, are expecting grandchild #7. Ray and **Fred Copps, '68 TU**, were co-chairs of the successful 1994 \$2.3 million fund drive for Stevens Point area Catholic Schools.

1963

**Patrick Dawson, TU**, and his wife, **Katie (Johnson) Dawson, '64 LH**, would like to hear from any friends from Regis and Loretto Heights! 1964

**Tip Cowen, TU**, works in real estate, buying, selling and re-modeling custom subdivisions, apartments and single family historic homes.

**Ed Feulner, TU**, has been appointed to the National Commission on Economic Growth and Tax Reforms.

1966

**Patrick Doman, TU**, was promoted to Senior Inspector with the DEA in 1993.

1968

**Michael Montgelas, TU**, writes that he was married in August of 1994.

1969

**Dr. Louis Chiara, TU**, travelled to Nicaragua for nine days in January to help treat scores of people in need of medical care. During his stay, he treated more than 225 patients and visited several hospitals and clinics, many of which had no electricity!

**Steve Forte, TU**, became President of Sullivan Hayes Brokerage Corp. in Denver, a commercial retail brokerage and shopping center development company. He has three children, one graduated from Loyola Marymount, one is a senior at Creighton and one is a sophomore at Boston College - all Jesuit Universities!!!

1972

**Wiley Davis, Jr., TU**, received his MPA from the University of Washington - Seattle and is currently serving as Directory of Student Activities and Services at South Maritom Community College in Phoenix.

1973

**Robert, TU**, and **Connie (Boden) '75 TU**, Larscheidt, have built a new home. Robert is now the Senior Building Inspector for Douglas County. Son Colin is 12 and Justin is 7. Connie has been appointed to the Board of Directors for Seniors, Inc.

**David Harris, TU**, is currently the Dean of Students at Stein Elementary School in Lakewood, Colorado. Dave has been at Stein as a teacher and Dean for 22 years. He is also the President of Alameda West Kiwanis and has been elected Lt. Governor for Division 9 of the Rocky Mountain District Kiwanis for 1995-96.

1974

**Robert F. Hayes, TU**, has been appointed the director of Finance and Treasury at The Gates Corporation.

1975

**Perry Van Dixon, UW**, is semi-retired and is putting his business degree to good use. He was a business management advisor while serving two years in the Peace Corp in the Fiji Islands. Then he went on to Kandy Sri Lanka where he was the Peace Corps Projects Director for a new "batch" of volunteers. He is now the General Manager of Koperasi Rotan Furniture factory in Sabang, Weh,

Indonesia, a small island at the very most northern tip of Sumatra.

1977

**Mark Keppel, TU**, started a conference and convention planning company, "Conference Sites", in 1990 and it is growing rapidly. In 1995, he started a new company, "Four Seasons Sports", a manufacturer's representative company for a diverse group of sporting goods lines, selling to specialty stores in the midwest and national mass merchants. We are always looking for new lines to represent. I am the President and CEO of both companies, and still an eligible bachelor!!

1978

**Pete McDonald, TU**, his wife Gail, daughter Emily, and son, Andrew, have moved into a new "Pulte" home on a cul-de-sac near a golf course!

1979

**Kenneth Landy, TU**, achieved #1 in the New England 35 and over doubles tennis with Peter Holmes in 1993. He and his wife were expecting their second child this April.

1981

**Tierney (Collins) Eson, TU**, has decided to stay home and be a full time mom since the birth of her daughter, Michelle. Her son, Christopher, is now 6.

1983

**Karey (Tomassene) Wittenborn, TU**, writes that her children, Ashley 5, and Jack 2 are doing great. Her husband Jerry started his own commercial printing company called McWitt Graphic Communication in Northbrook, Illinois. PS - Hi Meg!

**Frances (Henry) Rackow, R2**, became a licensed CPA in Georgia on September 1, 1993.

1984

**C. Ron English, R2**, recently accepted a position as Manager for Kentucky Region Biomedical Services with Columbia Health Care Corp of America. He relocated in March to Louisville, Kentucky with his wife Kay and their five grown children.

**Paul Lawler, R2**, graduated in December 1994 with an Executive MBA from the University of



## CLASS NOTES

Central Florida - the Charter Class! He was promoted to AT&T District Manager in August of 1994.

1986

**Pamela (Lytle) Clark, R2**, has opened a private practice in Littleton for Individual Couples and Group Psychotherapy. She employs cognitive behavioral and solution focused techniques.

**Barbara A. Johnson, MB**, is the Director of International Business Development at Bendata, Inc., a software manufacturer in Colorado Springs.

1987

**Marygrace Monroe, TU**, is engaged to be married at Christmas-time 1995, to a British man. The wedding will be in her home town of Milwaukee.

**Heather Brown, TU**, will be serving in Uganda with the Peace Corps, beginning in early July, 1995.

**Tracey Stark, TU**, received her PhD in Philosophy from Boston College in May 1995.

**Kenneth Tucker, MB**, accepted a new position with Mercantile Bank of St. Louis as Assistant Vice President, Daily Valuation Specialist in February.

**Erin (O'Neill) Boselli, TU**, and her husband Bob expect their first child in June. They have just moved to a new log home in Missouri Heights, between Aspen and Glenwood Springs. They are owners of the Aspen T-shirt Company and Breckenridge Shirt Company and keep busy during the rush of the winter season.

**Charles Reynolds, MB**, retired from Denver Water Information Systems on December 9, 1991.

**Brian Berry, R2**, is owner of Berry Technical Documentation, offering complete documentation services. Clients include Hewlett-Packard, B. Braun Medical, Inc., and Steamboat Ski and Resort Corporation.

1988

**Susan (Quinif), TU**, and **Mark Roney, '87 TU**, were married on March 25, 1995. They live in Denver where Mark is a systems administrator at The Prudential Insurance Company. Susan is Director of Regional Studies for Destination Hotels and Resorts. Mark finished his MBA at Regis this spring.

**Lissa Shope-Teoman, UW**, was married on August 27, 1994.

**Stephen Taylor, R2**, has become a Certified Quality Engineer through the American Society for Quality Control and is currently Quality Assurance Manager for Stadler Mold and Die in Littleton, Colorado.

**Sharlene (Klinger) Korsbon, TU**, has relocated to Houston and is working as a buyer for ENSR Corp.

1989

**Ray C. Norris, R2**, is taking "early get-out" after 13 years at Rocky Flats. Ray was in the Information Resources Department managing several different groups over the years. He wonders what life

will be like after worrying about 5000+ PC users and their myriad of problems! Ray will now be teaming up with his wife of 26 years, Joan, to work as partners for Perry & Butler Realty, Inc.

**Cindy Doll, R2**, is attending Real Estate classes to get her license as a real estate agent. She decided she needed a career change after nine years of working at Children's Hospital.

**Michael Schneider, R2**, is the Release Manager for US West Technologies for the Carrier/Business and Government Services Products and Business Systems.

**Keith Adams, TU**, is getting married to Maureen Wilson on October 28, 1995. Maureen is the daughter of **George W. Wilson, Jr., '64 TU**.

**Marian (Carey) Nielson, R2**, had a baby boy on April 12, 1994 and is working at Regis' Career Services Office as an Employer Relations Representative.

**Craig Scott, TU**, received a PhD in Communication from Arizona State last August and took a job at the University of South Alabama where he is an assistant professor in communication.

1991

**Maribeth Winston, TU**, announces her engagement to Gregg Spensiero. A May 1996 wedding is planned and they will live in Los Angeles.

**Julia (Coffey) Monaghan, TU**, was married to Gregory Monaghan on June 4, 1994 in her parents' hometown of Portsmouth, Rhode Island. They are living in Arlington, Virginia.

**Greg Iwan, UW**, has begun his studies at the University of Colorado at Denver where he is a candidate for an MA degree in Urban and Regional Planning. He has also accepted an appointment as the Assistant Director of Planning for the Catholic Archdiocese of Northern Colorado, officed in Denver.

**Glen Axelson, MB**, was elected to the board of Hyland Hills Park and Recreation District in 1992.

**John P. Lynott, R2**, accepted a new position in July 1994 with AT&T Network Systems after 13 years with Mountain Bell and US West. Also, he became a grandfather in October 1994 to a beautiful baby girl named Ashley.

**Phil Conrod, R2**, was promoted to the Network Support Manager for SAFECO Life Insurance Companies in Redmond, Washington. He had a second daughter, Jessica, and is very involved in his church and youth ministries. He also serves as point man in his church for Promise Keepers. His wife Tiffany and his other daughter, Stephanie, are the joy of his life.

**Reverend Pio O'Connor, OFM, TU**, was ordained on December 9, 1994 by Bishop Donald Pelotte, the Bishop of Gallup, New Mexico. He is a Franciscan priest on the Navajo Reservation in Chinle, Arizona. He writes for prayers for himself and the Navajo people.

**Terri (LaByer) McGee, R2**, is happy working for the State Government of South Carolina as a Management Trainer.

**Julie Roselli-Raya, NU**, is currently on active duty in the Air Force and in her first year of a MSN degree for Nurse Anesthesia through the University of Texas Health Science Center in San Antonio.

1992

**Dana (Boyd) Flageolle, TU**, was married to Steve Flageolle on November 26, 1994 in Denver.

**Karen (Blaine) Oldfield, HR**, was married to Gary Oldfield in June of 1994. She is currently working at a hospital in Richland, Washington.

**Barry Hall, TU**, is back in his home town of Tulsa, Oklahoma after working for several years in Minneapolis. Barry is a Permanent Placement Counselor for Maxwell Health Care, Inc.

**Jim Reed, R2**, has been appointed to District Director for the Colorado Region of Texas Life, effective April 1, 1995.

**Denise (Stone) Agnew, R1**, and her husband Terry currently live in Hawaii where Denise works for Hawaii Pacific University and Terry is in the Army.

**Dave Stang, MS**, has been promoted to marketing services manager for the NAFTA markets at Brown-Forman Beverages Worldwide.

**Katie Masterson, TU**, is working for Working Assets Long Distance Company, a socially responsible long distance company. She just moved to San Francisco from Chicago in January 1995.

**Molly St. Denis-Hamann, R2**, is attending graduate school and majoring in Urban and Regional Planning at the School of Architecture and Planning at the University of Colorado at Denver.

**Alicia Swanson, TU**, is working at Rourke and Company, a high tech Public Relations firm. She was promoted on her year anniversary to Senior Associate.

**Jerry Maclear, MB**, has been named Supervisor of Financial Examinations in the Colorado Division of Real Estate. Regis was a key part along with God's direction in this event.

**Delores (Gertner) Stumpf, UW**, is a Chapter 1 reading teacher at Franklin Elementary in Sterling, Colorado.

**Avis (Britt) Blow, R2**, was recently promoted to Assistant Branch Manager for the Life Savings Bank in Suffolk, Virginia.

1993

**Sarah Eads, TU**, will be married to Brad Abram, a Brown University grad of 1994, on July 22, 1995 in Loveland, Colorado. Both are working in Albuquerque, New Mexico where Sarah will be attending the University of New Mexico.

**Deborah Benetti, R2**, is living in Hawaii, working as financial advisor, and engaged to a wonderful man. She is having fun with her teenage daughters.

**Nancy Larson, MB**, has joined Browning Ferris Industries as Marketing Manager.

**Cherie (LeMay) Hebda, TU**, married Derek Hebda on May 21, 1994. She is currently attend-



## CLASS NOTES

ing the University of Illinois at Urbana-Champaign, pursuing a Master in Library and Information Science degree with an emphasis upon children and young adult services.

**Rebecca Bachroot, TU**, is teaching at Mount St. Vincent's School in Denver. It is a home for abused children.

**Paul Mack, TU**, has been employed at the National Pro-Am City League's Association, Inc. for the past two years. He is their Account Executive. He has also been performing, both singing and playing the violin, with the Absolute Ensemble, a New York City based orchestra ensemble.

**Thomas Flack, R1**, has retired from the military and is now a self-employed cab driver.

**Herbert Garvin, R2**, has moved to Oklahoma to pursue a career in Real Estate and Property Management.

### 1994

**Denise Ortega, R2**, is now moving on to her graduate degree at Regis!

**Bruce Finkbeiner, R2**, has been promoted to supervisor at Best Buy since graduation from Regis. He will be entering their management program this year.

**John Riordan, MB**, is on active duty as a Captain in the United States Air Force and he feels his Regis MBA has definitely prepared him for his Air Force career!

**Andreatta Grisenti, TU**, began work immediately after graduation at her church - Crossroads Church of Denver, as an administrative assistant. She writes for and edits various church publications, including the bulletin, brochures and newsletters. She also helps administer the Denver Extension of Calvary Chapel Bible College. She was married June 24, 1995.

### BIRTHS

**Christopher Larson, '76 TU**, had a daughter, Heather Kathleen Larson, in January of 1993.

**Dennis McGrath, '78 TU**, and his wife had their first child in April.

**Kathleen (Hennessey) Dunfee, '79 TU**, and her husband Mike are proud to announce the birth of their son, Sean Deward, on November 20, 1993. A sister Sarah, and brothers Michael and Paul are delighted to have Sean in the family.

**Tony Lee, '81 TU**, and his wife Jane celebrated the birth of their second daughter, Samantha Rebecca on October 16, 1994. She joins her sister Betsy, who turns 3 in March. Tony is still editor of the National Business Employment Weekly at Dow Jones and co-author of a new book, "The Jobs Rated Almanac".

**Jim Walden, '81 TU**, had a daughter on April 2, 1994, Claire Elizabeth. She joins two older brothers, Jimmy 6, and Daniel 4.

**William F. Cummings, '82 TU**, announces the birth of Joseph Cummings on August 23, 1994.

**Zackary C. Kaliher, '82 TU**, and his wife Mary Ann are proud to announce the birth of their second daughter, Haley Catherine, on January 9, 1995 in Portland, Maine. Haley joins Leah, 3, and Damien, 10.

**Rebecca (Rech) Cutler, '83 TU**, and her husband David had their first baby on January 12, 1995, a girl, Addie Katherine. She weighed 6 lbs. 13 ozs. and was 18 inches long.

**Teresa (Baker) Stockley, '83 TU**, and her husband Wayne are happy to announce the birth of their son Adam Joseph on February 19, 1994. Adam joins his big sister, Emily, 4, and big brother, John, 3.

**George Klekos, '84 TU**, and his wife Maria wish to announce the birth of their second child, a beautiful daughter, Mia Elizabeth, on May 12, 1995. She joins their son, Max.

**Tom Greene, '85 TU**, and his wife Bridget, proudly announce the birth of their second daughter, Molly, on March 27, 1995.

**Katrina (Winckel) Lichtenfels, '85 TU**, and her husband Ed welcomed the arrival of their baby girl, Katherine Ann, on January 20, 1995.

**Teresa (Berson) Curtis, '86 TU**, and Michael are pleased to announce the arrival of our third daughter, Katherine Ann, born January 4, 1995. She joins her older sisters, Christina, now four and a half and Michelle, two and a half.

**Melissa (Perry) Robillard, '86 TU**, and her husband Biff had their first baby, a boy, Griffin Matson, on February 28, 1995. He weighed 7lbs. and 13 ozs.

**Elizabeth (Delay) Brown, '87 TU**, and her husband Bryce announce the arrival of their beautiful baby boy, Andrew David, on February 23, 1995. Only 18 years and he too can be a Regis freshman!!

**Jerry, '87 TU**, and Missy (Castelli) Gallegos, '89 TU, are proud to announce the birth of their son, Jerry Michael Gallegos, Jr. He was born on February 7, 1995 and joins his two-year old sister, Amanda.

**John and Mary (McCullogh) Saeman, '87 TU**, had their third baby, Jackson William, in May of 1994.

**Ann (Mize) Warner, '89 TU**, and her husband Michael gave birth to their first child, Christopher, on November 30, 1994.

**Brad Hector, '89 TU**, and his wife Andrea, are thrilled at the arrival of daughter, Madison Marie, born June 2, 1995.

**John Flanagan, '89 TU**, and his wife are proud to announce the birth of Aidan John on December 18, 1994.

**Kim (Kaveny) Hardin, '89 TU**, and her husband John announce the birth of their first child, Samantha Grace, on January 12, 1995.

**Rebecca McIlwain, '91 MA**, and her husband Mike had their third child, James Michael on September 12, 1994. He is a pure joy! Rebecca is coordinator of Youth Ministries at St. Elizabeth Ann Seton in Odessa, Texas and is working out of

the home with James Michael and his two older sisters, Erin 10, and Megan 7.

**Diana (Tullos) Stephens, '91 R2**, and her husband Mike welcomed their first child, Christopher Michael, on May 15, 1994. He weighed 6lb. 12 ozs. and was 20 inches long.

**Christopher, '93 TU**, and **Michelle (Freeman) Trost, '94 TU**, have a new baby boy, Cameron, born on December 29, 1994. He looks just like his Dad.

## DECEASED ALUMNI

**Marciano B. Parungo, '31 TU**, on April 3, 1995.

**Thomas W. Nevin, '32 TU**, on March 25, 1995.

**Alec J. Keller, '36 TU**, on May 26, 1995.

**J. Randolph Aemmer, '38 TU**, on April 29, 1995.

**Charles H. Brittan, '39 TU**, on February 28, 1995.

**Robert J. Stewart, '40 TU**, on May 6, 1995.

**Andrew P. Curtiss, Sr., '42 TU**, on April 26, 1995.

**Gordon Joseph Hayes, '45 TU**, on March 31, 1995.

**John P. Peetz, Jr., '50 TU**, on April 11, 1995.

**Richard H. Wright, '50 TU**, on February 18, 1995.

**Vincent J. Doyle, '53 TU**, on December 1, 1994.

**Louis Salvatore Petralia, '58 TU**, on May 19, 1995.

**John J. Flaherty, '83 TU**, on May 26, 1995.

**Ernest L. Quintana, '71 TU**, on April 13, 1995.

**Daniel J. Hommel, '77 TU**, on April 21, 1995.

**Carol (Mirabella) Jow, '91 R2**, in January 1995.

**Barbara Jean Hayden, '92 R1**, recently passed away.

## LORETTO HEIGHTS

### 1948

**Marie (Donahue) Kane, LH**, is currently actively involved in the Life in the Eucharist program at St. Martin de Porres Parish. Along with her husband, she is also helping with the Adults Becoming Catholic Program.

### 1949

**May (Burgess) Nielsen, LH NU**, is currently residing in Denmark with her Danish husband, who is undergoing treatment for cancer.

### 1951

**Viola (Saykelly) Ramos, LH**, writes from El Paso, Texas that her son, Danny Roy, has a bad heart and is in need of a transplant.



## CLASS NOTES

1953

Mary Kay (Grace) Connor, LH, has compiled and edited a collection of her late husband's, Dick Connor, '56 TU, articles; "Dick Connor Remembered". It is published by Fulcrom, Inc. of Golden. Further questions, please contact Mary Kay through the Alumni Office at 303-458-3536.

1956

Barbara (Bordeleón) Corson, LH NU, is working as a medical management specialist consultant at State Farm. Five of her seven children are married and she has three grandchildren.

1958

Beverly (Slavsky) Smith, LH, is a licensed professional counselor and Director of Counseling at Cabrini High School. She has two grand children, ages six and four. She keeps busy playing golf and walking.

1959

Mary (Joerns) Nass, LH, and her husband Ray, '58 TU, are expecting grandchild #7.

1961

Emma (Profaizer) Steen, LH, has a 28 year old daughter who is currently a Peace Corps Volunteer in Mali, West Africa. She is working in education, nutrition and agricultural programs. She has been there since February of 1995 and her program will be complete in June of 1996.

1964

Emily Eichman, LH, has been awarded a stipend by the National Endowment for the Humanities (NEH), a federal grant-making agency, to participate in the 1995 program of Summer Seminars for School Teachers. The seminar will be held in Avignon, France.

Katie (Johnson) Dawson, LH, and her husband, Pat Dawson, '63 TU, would love to hear from any other Regis and Loretto grads.

1966

Jean (Schattenberg) Barnes, LH, writes that her daughter Rachel, 22, graduated in May from Duke University with a BA in Religion, and hopes to attend Physical Therapy graduate school. Caroline is 18 and a freshman at Duke with interest in Psychology. Jean's husband Bob (USFA '67) is busy as a cardiothoracic surgeon. Jean teaches five year olds in Bible Study Fellowship and does part time library work.

Therese (St. Clair) Lloyd, LH, and her husband Bill have lived in Idaho Falls for the last 12 years. Bill works as Director of Plans and Budget, DOE, Idaho. She is a teacher and guidance counselor at Holy Rosary School. They have three children, Elizabeth 22, John 21 and Kathryn, 14.

1968

Tessie (Leon) Cicarelli, LH NU, is working as a Medical Case Manager for CorVel Corporation and teaching 15 fitness classes a week. Son, Antonio, is 19 and a freshman in college. Daughter, Crissy, is 16 and progressing well after having been born with severe handicaps.

Carmen (Heft) Mikolajcik, LH NU, has started her own business as an Independent EQUINOX Representative, an environmentally conscious company that allows her to pursue a lifelong commitment to promoting health and high level wellness. Her husband Brigadeer General Tom Mikolajcik, is now the Air Force Director of Transportation at the Pentagon. Their youngest son, JP, is a freshman at Salesian High School.

1969

Linda (Trousdale) Curtis, LH, has been in touch with her long lost roommate Carolyn (Neal) Meyer, and found they are both using their education as travel agents!

Mary Anne Moran, LH NU, just moved back to Denver and works as the Manager of Internal Client Services for The Pascoe Associates, a full service advertising company. She has three children in college and one graduating high school. She also has a three year old grandson, Teddy. She plans to begin work on a Master's degree in the fall and has been working on a political campaign as a legislative aide to Senator Charles Duke. She still sings as a soprano in her choir.

Patricia O'Kane, LH NU, is back in school as a full time graduate student in Elementary Education Administration. Course work should be done by fall and then she plans to intern as an assistant Principal. After that she'll be looking for a principalship....anyone have any ideas in Southern Colorado?

Linda Quintero, LH, is attending the Air Force Air War College in Montgomery, Alabama. She will leave in June 1995 for McGuire Air Force Base in New Jersey.

1977

June (McKeown) Greiner, LH UW, is a psycho-therapist in private practice. Her office is located between Longmont and Boulder.

Beth (Breneman) Avery, LH UW, is attending the University of Connecticut School of Social Work and will receive an MSW in 1996.

1983

Valerie (Ellison) Foster, LH UW, received her MA from the University of Northern Colorado. She has worked as a family therapist. In 1991 she moved to Medford, Oregon and began working with Family Friends, a nationally known non-profit agency which counsels abused children and their families. Currently, she is the ICA (Intake, Crisis and Assessment) Therapist for Jackson County

Children's Advocacy Center and a member of the Jacon County District Attorney's Team Review of all child abuse cases in the county. She takes on approximately 250-300 new cases a year.

Jill Morstad, LH, has earned a PhD in English with an emphasis in Rhetoric/Philosophy from the University of Nebraska. She is a lecturer in the English Department at the University of Nebraska and looking for a new job.

1986

Elizabeth (Sullivan) Lee, LH, has a company called Curtain Call Entertainment which strives to create jobs for local dancers and performers, anything from Barmitzvahs to corporate sales meetings. She is trying to positively promote dance in a respectable way. Things are going great. She will be having her third child in August. She also wants to remind everyone about the upcoming 10 year reunion, in July of 1996.

## DECEASED ALUMNI

Mary Katherine (Reardon) Lutz, '29 LH, on March 18, 1995.

Mary Lou Stephenson, '45 LH, recently passed away.

Marie (Jeffries) Eidel, '45 LH, recently passed away.

Mary Ann (Schwab) Ohler, '45 LH, on January 13, 1995.

Vera (Lynch) Rosaler, '45 LH, recently passed away.

Catherine (Job) Quering, '46 LH, on April 30, 1995.

Teresa (Bailey) Grant, '47 LH, on April 23, 1995.

Dorothy (Bachman) Durbin, '55 LH, recently passed away.

Gretchen (Geiger) Harsch, '58 LH, on October 13, 1994.

Henrietta (Cavarra) Fonio, '60 LH, on March 10, 1995.

Catherine M. Burke, '65 LH NU, recently passed away.

Sister Damian Marie Simmons, S.L., former LHC faculty, passed away on April 18, 1995.

## Alumni Making a Difference

David '66 and Lynn (Shields) '66 LH Long of Princeton, New Jersey recently hosted the Regis University Forensics Team during the World University Debating Championship. David and Lynn opened their home for one week to four students and one coach making it possible for the Regis team to participate in the competition. Thanks, David and Lynn YOU do make a difference for Regis.





3333 Regis Boulevard  
Denver, Colorado 80221

Non-Profit Org.  
U.S. Postage  
**PAID**  
Denver, CO  
Permit No. 3101